

ArcticRIMS

Regional Integrated Hydrological Monitoring System for
the pan-Arctic Land Mass

Built at the University of New Hampshire

with funding from

National Aeronautics and Space Administration
National Science Foundation

Pan-Arctic Domain



- **Interconnectivity:**
All grid cells connected to the Arctic and Northern Seas to define river systems and pathways
- **Hierarchical:**
Grouping by drainage basin, sea basin and continent
- **Commonality:**
Established NSIDC Northern Hemisphere 25km EASE Grid (equal area polar projection)

Pan-Arctic Domain

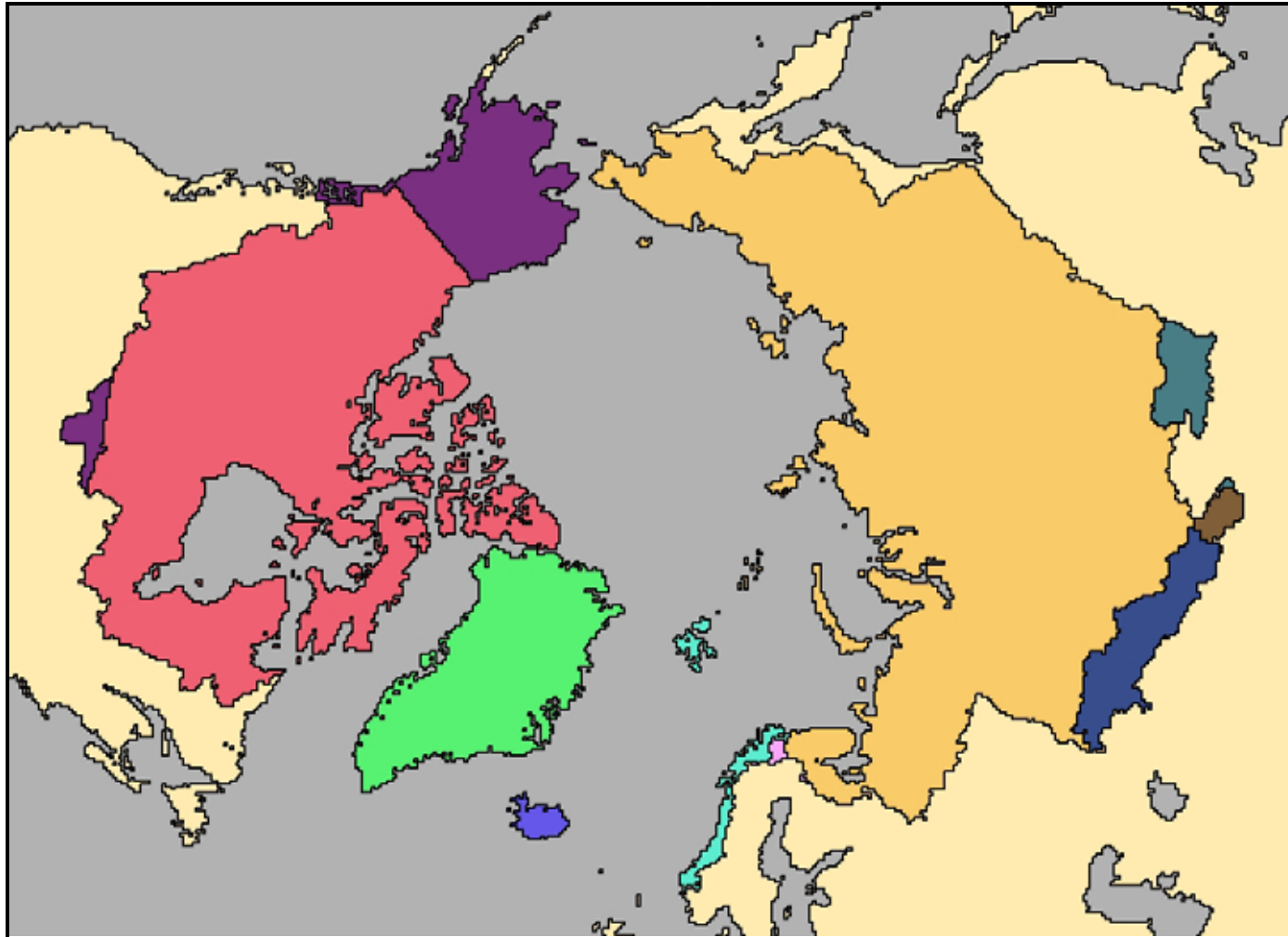


- **Interconnectivity:**
All grid cells connected to the Arctic and Northern Seas to define river systems and pathways
- **Hierarchical:**
Grouping by drainage basin, sea basin and continent
- **Commonality:**
Established NSIDC Northern Hemisphere 25km EASE Grid (equal area polar projection)

Kara Sea
Drainage
Basin

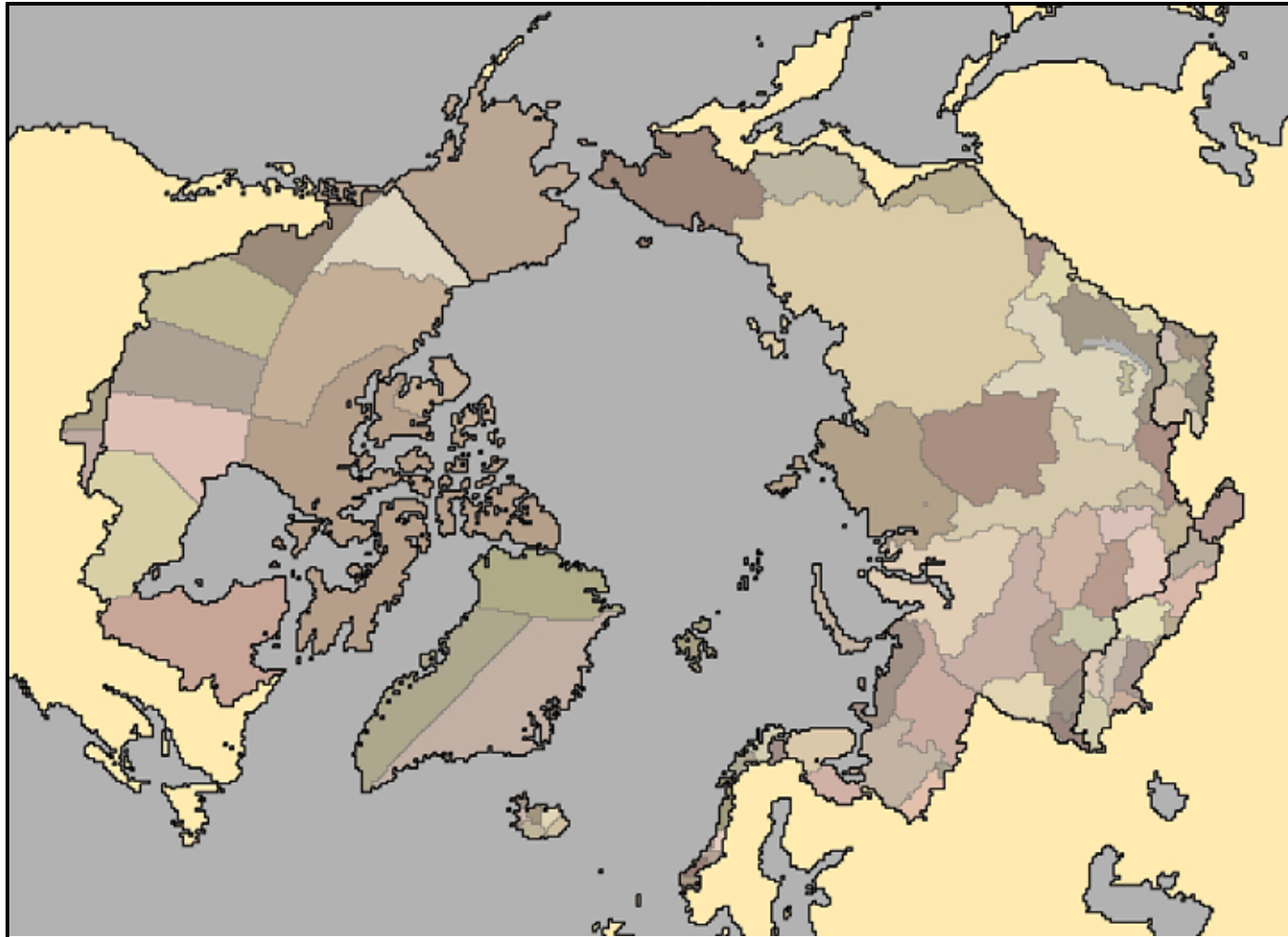
Pan-Arctic Political Subdivisions - National

11 Units

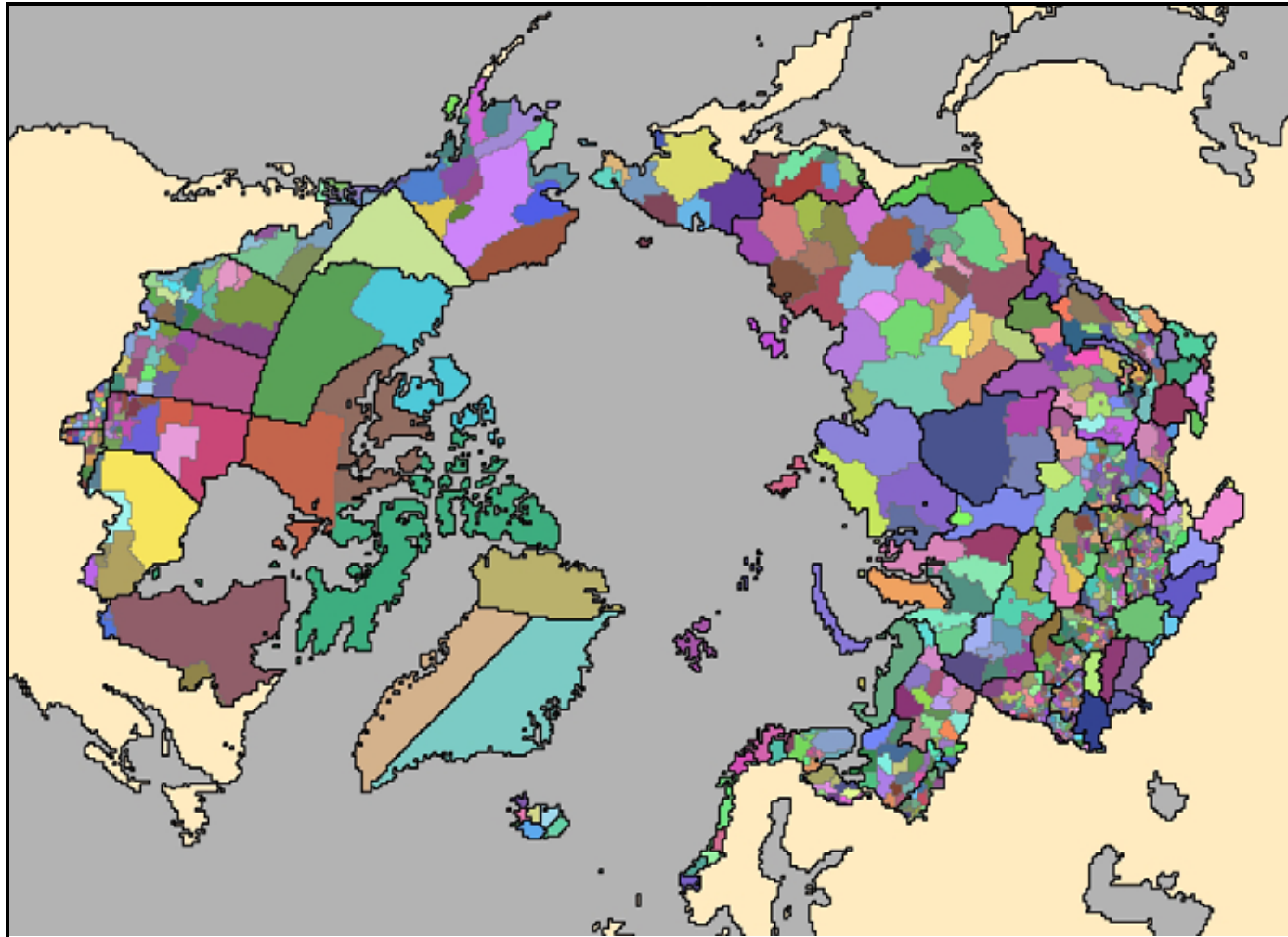


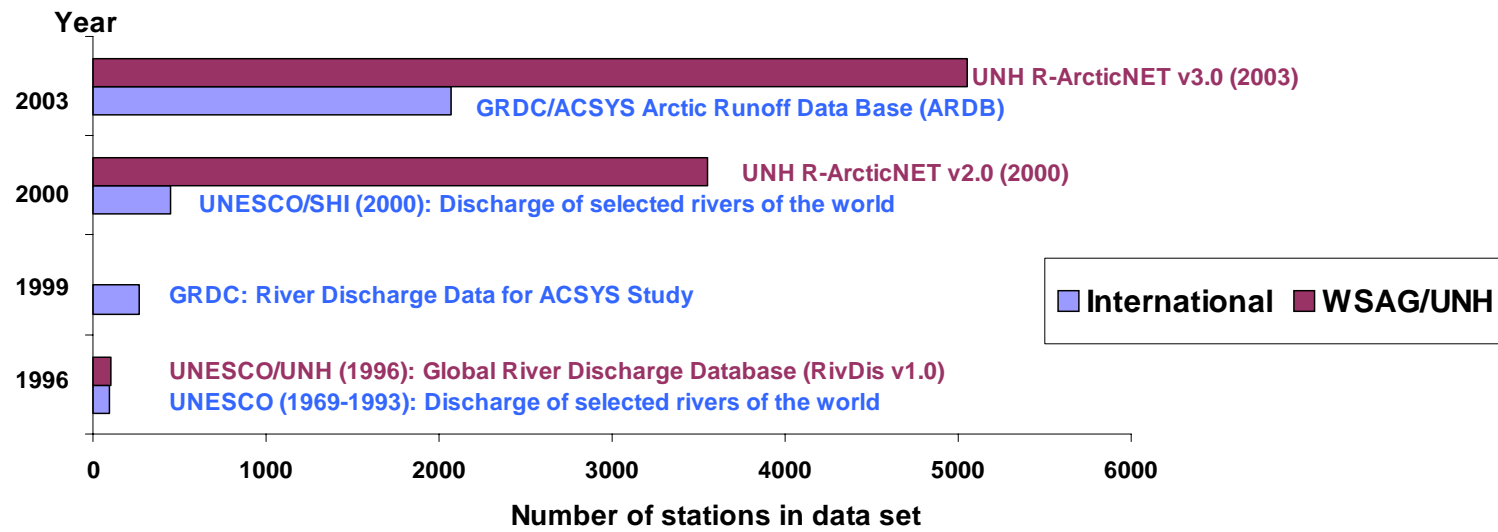
Pan-Arctic Political Subdivisions - Sub-National

113 Units

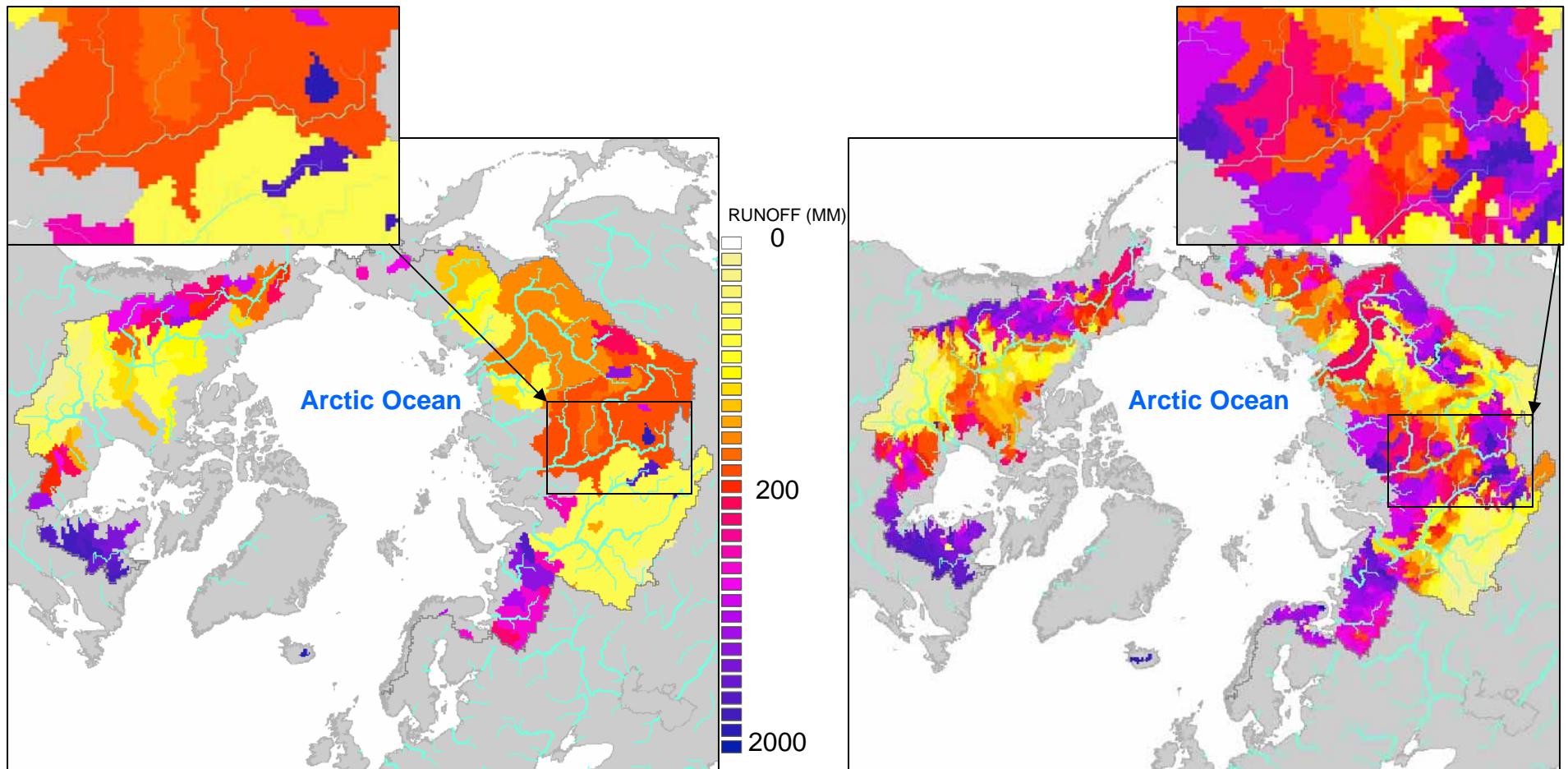


Pan-Arctic Political Subdivisions - Administrative Subdivisions 912 Units





Long-term mean annual runoff in the pan-Arctic based on observational data



UNESCO/UNH (1996): Global River Discharge Database (RivDis v1.0)

UNH R-ArcticNET v3.0 (2003) A Regional, Hydrometeorological Data Network For the pan-Arctic Region

<http://RIMS.unh.edu>

<http://www.r-arcticnet.sr.unh.edu/v4.0/index.html>

<http://nasademo.sr.unh.edu/maps/>