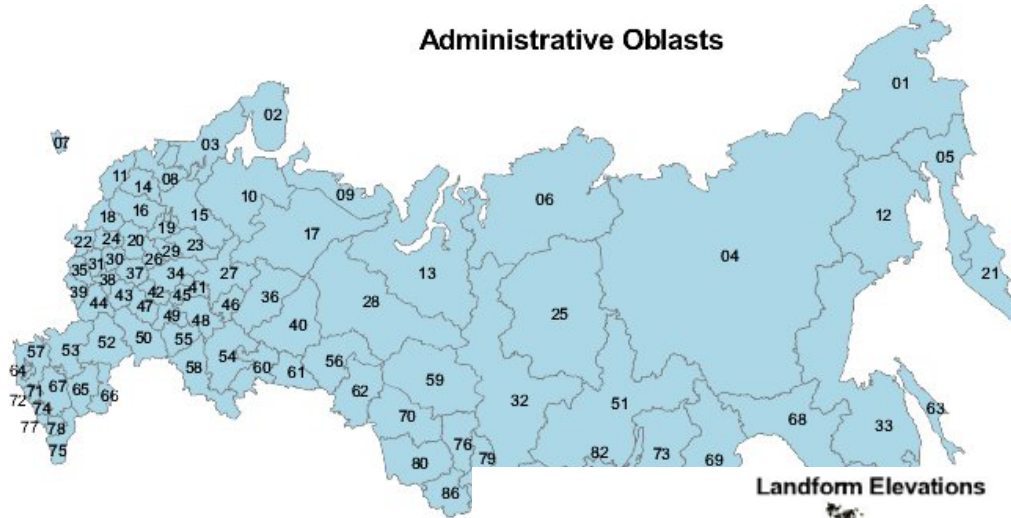


IIASA environmental data holdings for Northern Eurasia

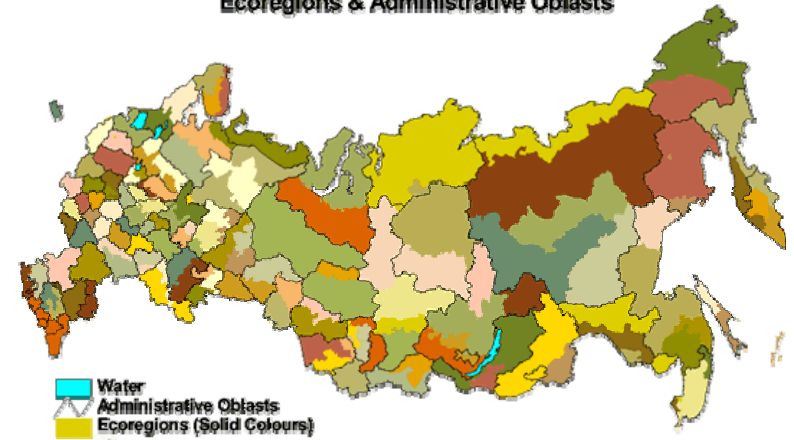
Anatoly Shvidenko,
IIASA Forestry Program

Different ways of regionalization

Administrative Oblasts



Ecoregions & Administrative Oblasts



Landform Elevations



Slope Classes



Vegetation Zones



Basic layer of ILIS of Russia

- ◆ Landscapes (1:2.5 Mio)
- ◆ Soil (1:2.5 Mio)
- ◆ Vegetation (1:2.5 Mio)
- ◆ Forests (1:2.5 Mio)
- ◆ Land cover (1:4 Mio)
- ◆ Land cover (1 km resolution) – under preparation

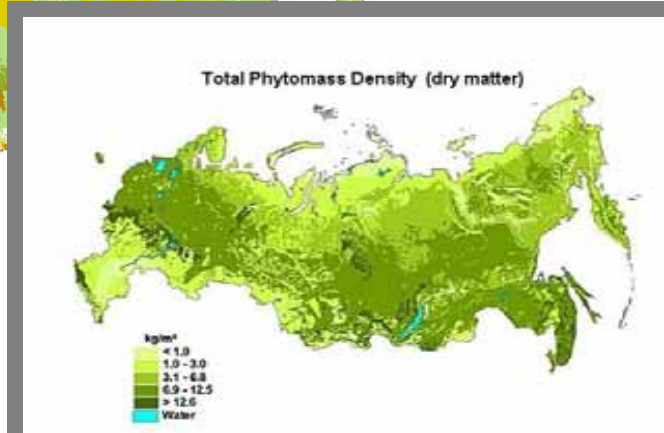
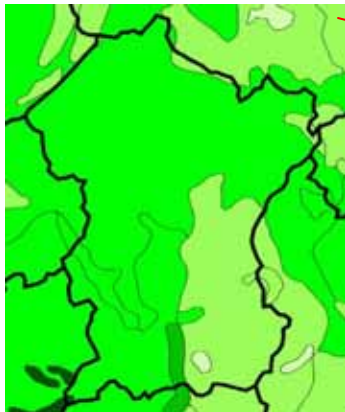
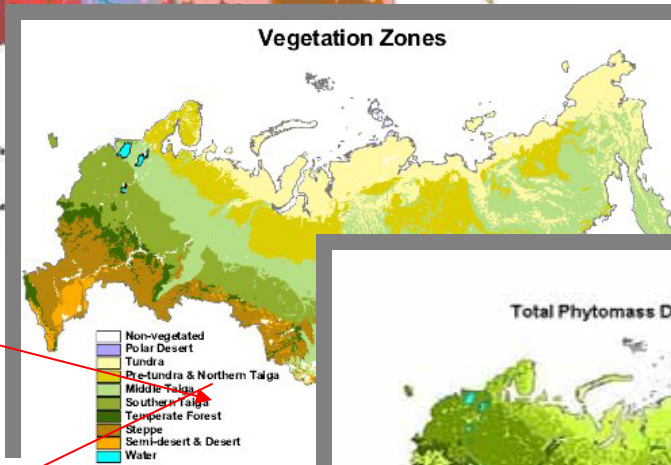
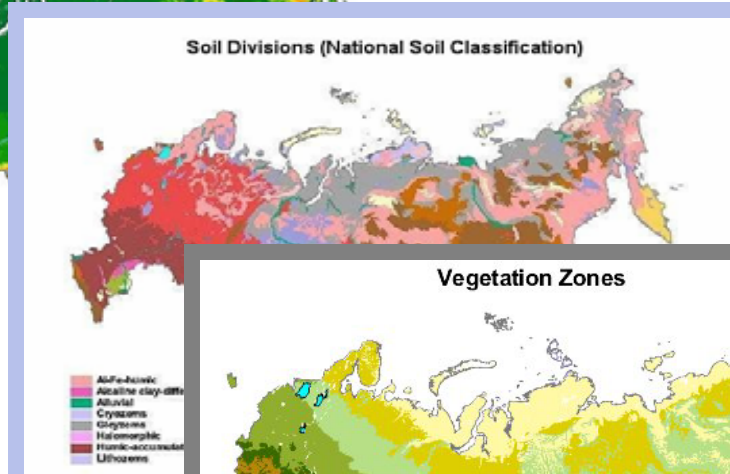
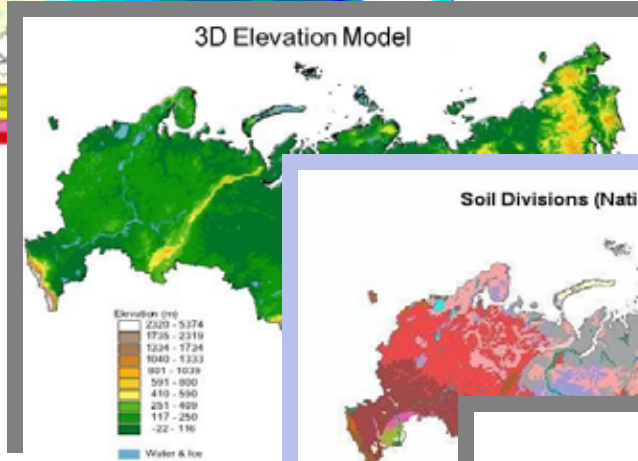
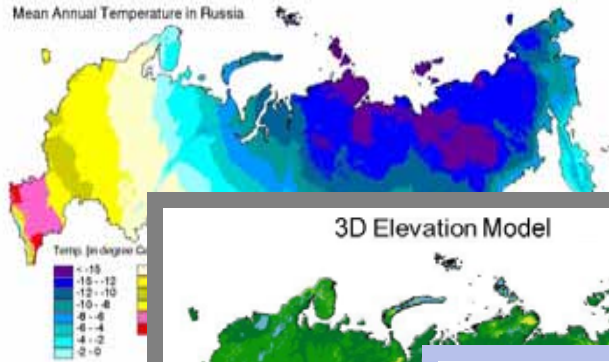
Soil map 1:2.5 mio



Forest enterprises



Some layers of the Integrated Land Information System

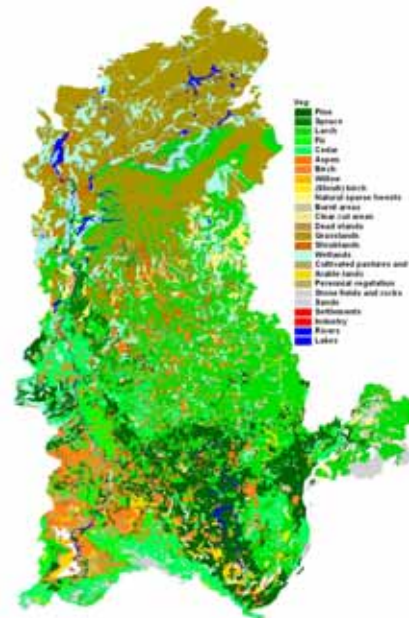


Integrated land information system - East Siberia

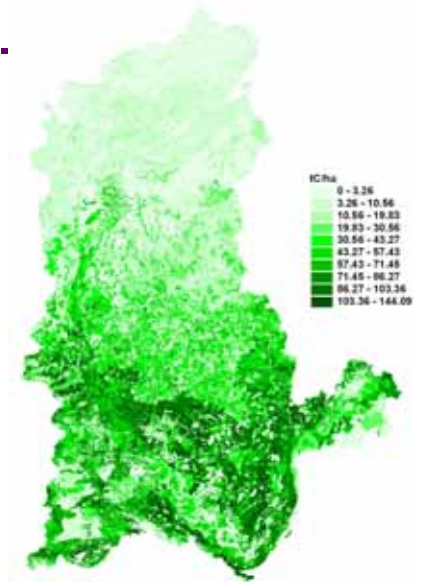
Examples from EU Project SIBERIA-II



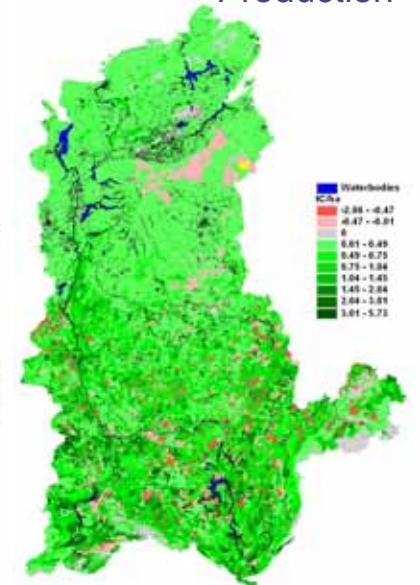
Land Cover (MODIS)



Net Primary Production

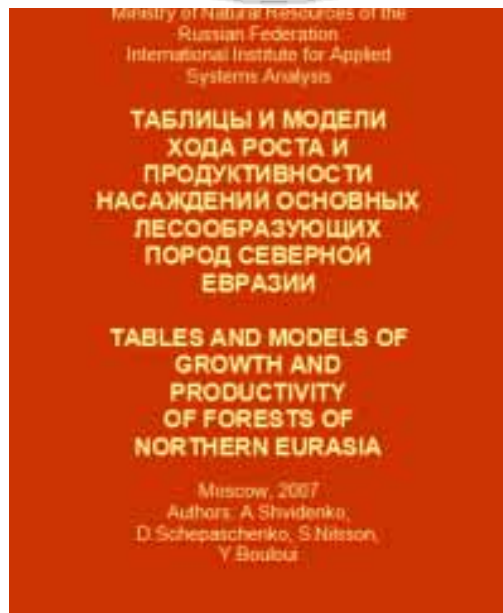


Net Ecosystem Production



Indicators of biological productivity of forests (by forest enterprises)

- ◆ Live biomass (by 7 fractions)
- ◆ Gross growth
- ◆ Net growth
- ◆ Mortality
- ◆ NPP (by 6 fractions)



For further information :

- ◆ Russian Forests and Forestry CD:
http://www.iiasa.ac.at/Research/FOR/forest_cdrom/
- ◆ Semi-empirical models for assessment biological productivity of Northern Eurasian forests. *Ecological modeling*. 204 (2007). P.163-179.
- ◆ “Tables and models of growth and productivity of forests of major forest forming species of Northern Eurasia”. Russian Federal Forest Service. Moscow, 2007. 803 pp.