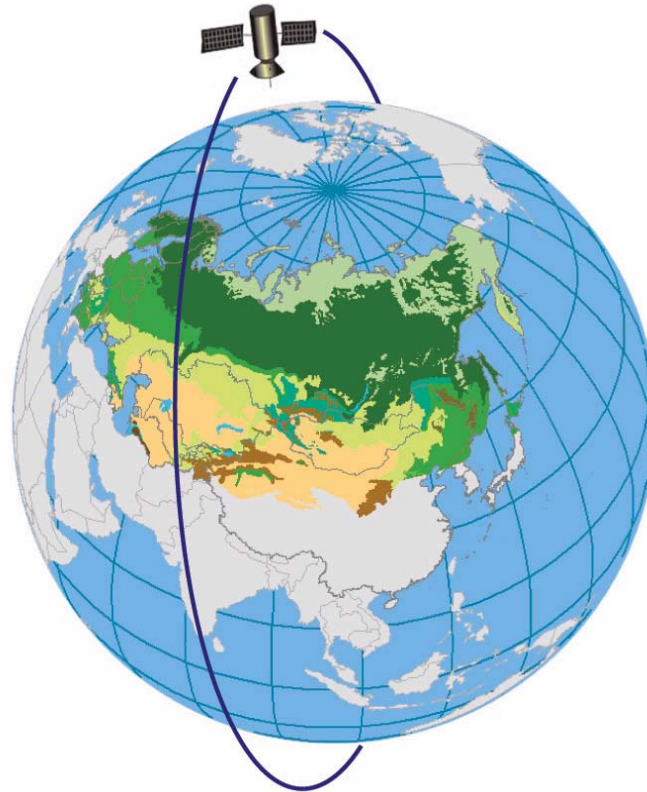


**FOR MORE INFORMATION SEE THE NEESPI WEB SITE:**

***<http://neespi.org>***



(COURTESY PH)



**Side Note:**  
*“NEESPI” is pronounced  
approximately like the  
Russian phrase for  
“Don’t sleep”*

# **Northern Eurasia Earth Science Partnership Initiative**

# Dynamics of the NEESPI statistics

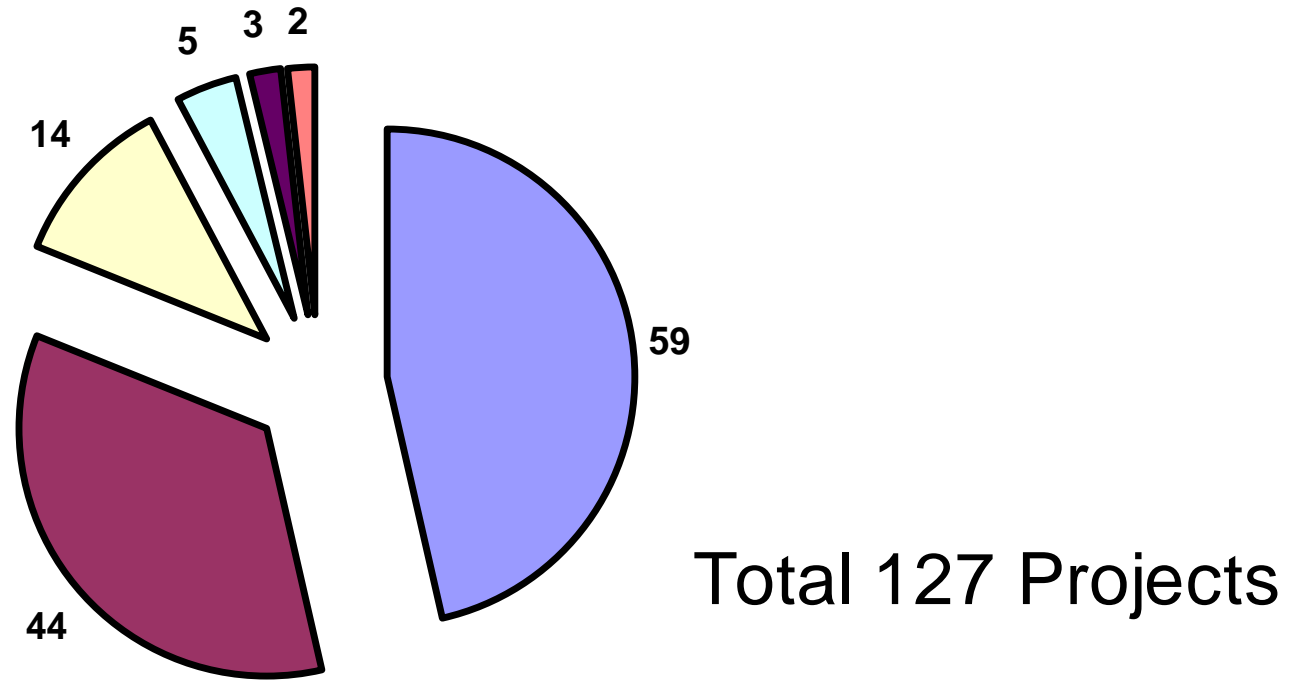
**In December 2004, the NEESPI Science Plan was released after a successful peer review process.**

**In July 2006, 364 scientists of 195 institutions from 31 countries participated in the first 54 funded projects.**

**Current numbers (May 2008): More than 560 scientists from more than 200 institutions are working on 127 individual funded projects under the Initiative umbrella (with annual budget ~\$15M) and several more projects are in the process of joining NEESPI.**

**Additionally, NEESPI receives in kind assistance from EU, US, Russian, Chinese, Japanese, and International Agencies and Institutions.**

# NEESPI Projects by country; May 1, 2008



■ All US Agencies

■ All EU Agencies

■ All Chinese Agencies

■ All Russian Agencies

■ All Japanese Agencies

■ Canada

# NEESPI Outreach

<http://neespi.org>

**During the past 3 years, 20 dedicated NEESPI Workshops and 5 NEESPI Open Science Sessions at the International Meetings were convened.**

**In 2005-2006:** Approximately **200** papers and books were published

The publication statistics **for 2007** has not yet been completed but the count of refereed publications has already exceeded **150**.

**In April 2007:** 1st Special NEESPI issue (13 papers) in *Global and Planetary Change*

**In December 2007:** 2nd NEESPI Special issue in *Environmental Research Letters* (15 papers)

An overview paper for *Bull. Amer. Meteorol. Soc.* is in preparation.

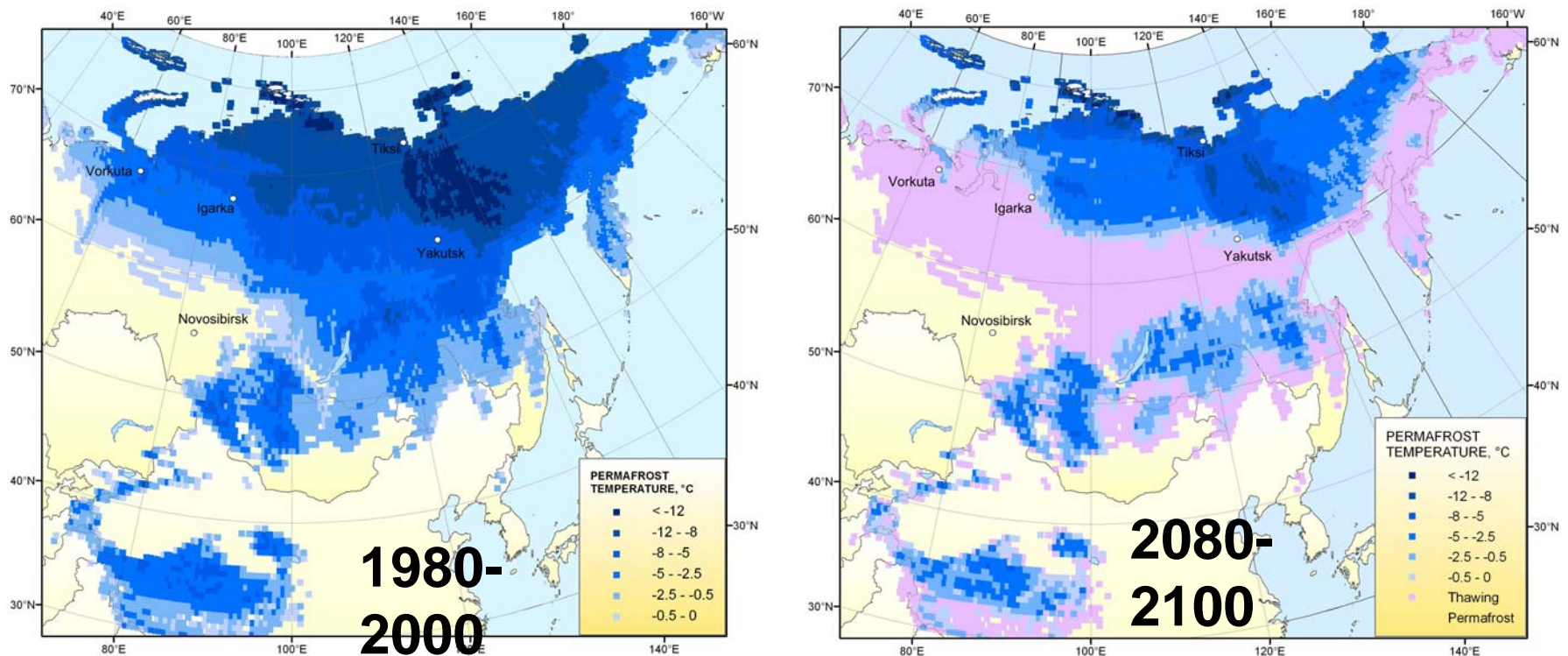
# **First phase foci of NEESPI: Monitoring and analyses**

- **Monitoring the energy & water cycles**
- **Monitoring the cryosphere**
- **Monitoring the biogeochemical cycles, land use, and land cover**
- **Monitoring and projection of dust storms and air pollution**

Recent strengthening of the  
NEESPI research focus  
towards **projections...**

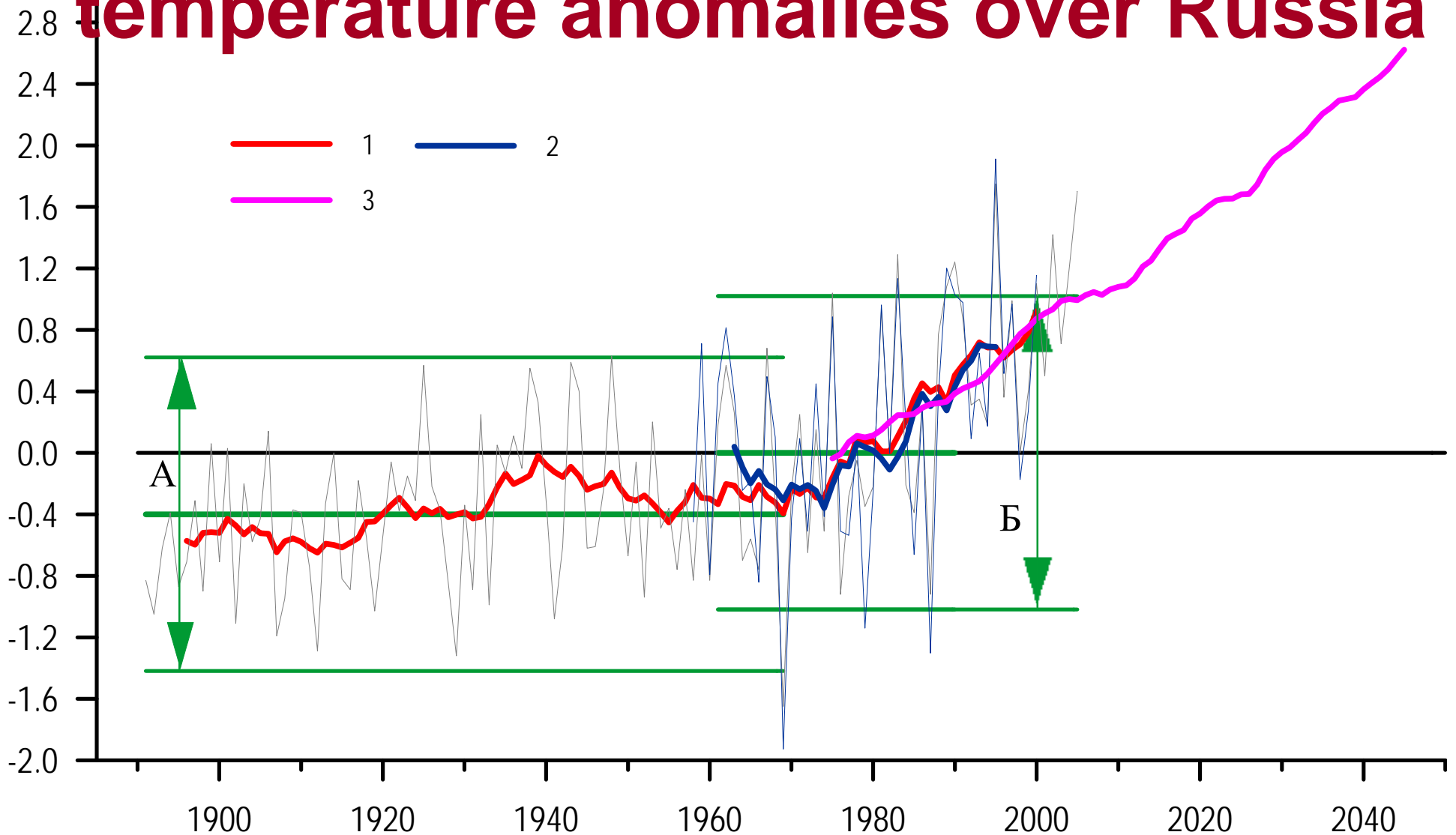
**i.e., on modeling; and  
regional modeling will play a  
key role within this focus...**

# Projections of climate, cryosphere, and terrestrial ecosystems



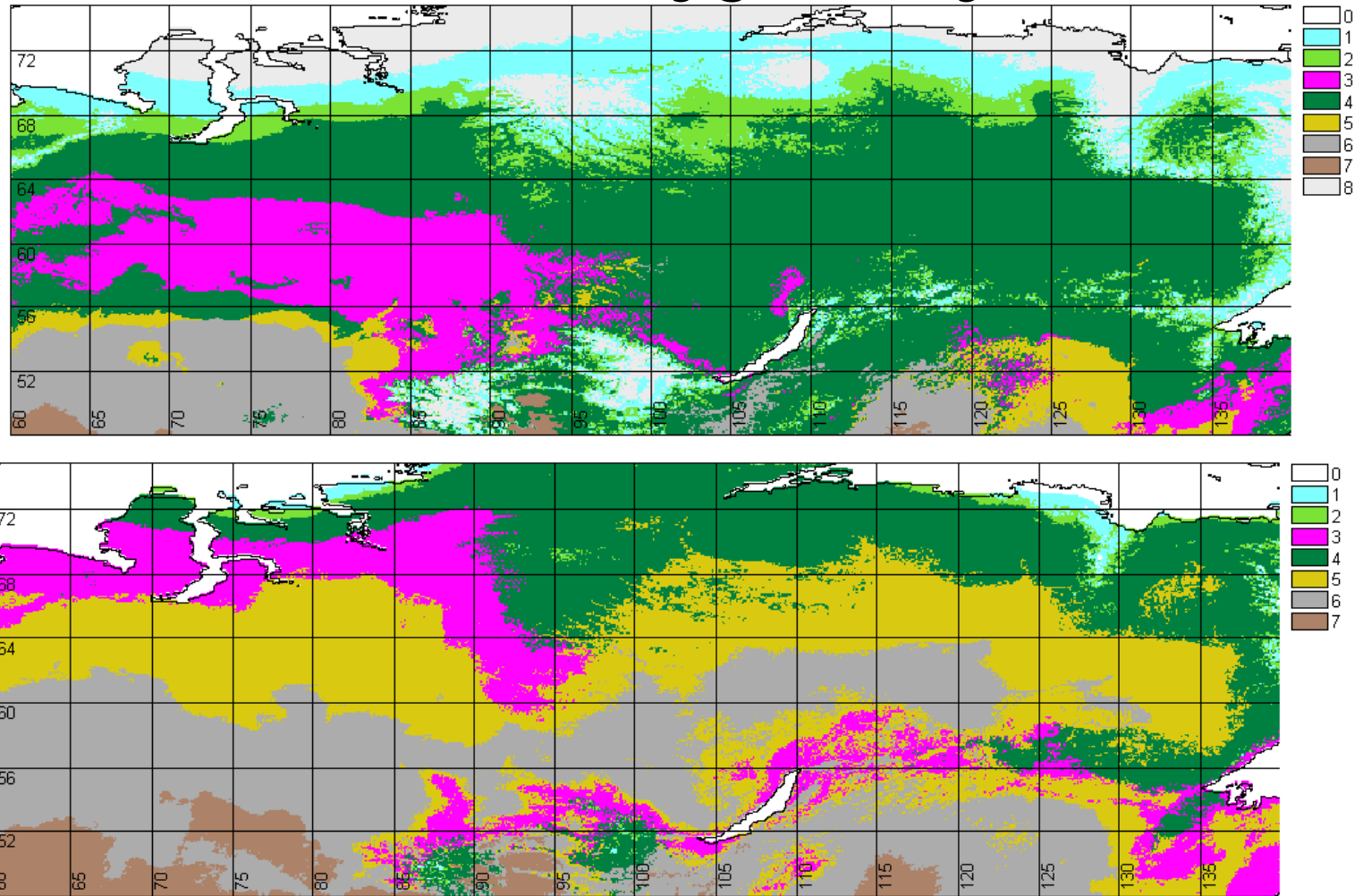
Modeled permafrost temperatures in Northern Eurasia (mean annual temperature at the permafrost surface).

# Observed and projected surface air temperature anomalies over Russia



(1) station data, (2) reanalyzed (ERA-40) data, and (3) simulated /projected by 17-member ensemble of the latest IPCC Global Climate Models in a "business as usual" scenario (Meleshko et al. 2007) .

# Biome distribution over Siberia in current (a) and 2090 (b) climates (Vygodskaya et al. 2007)



Water (0), Tundra (1), forest-tundra (2), darkleaf taiga (3) and lightleaf taiga (4), forest-steppe (5), steppe (6), semidesert (7), and polar desert (8).

During the past 3 months this is the  
third NEESPI gathering

- **March 17-19, 2008 Workshop of the NEESPI Focus Research Center for Biogeochemical Cycles. Max-Planck Institute for Biogeochemistry, Jena, Germany** (52 presentations, 28 oral and 24 posters)
- **April 13-18, 2008, Vienna, Austria. NEESPI Session at the European Geosciences Union General Assembly 2008. Session BG2.8: "Land-atmosphere interactions in Northern Eurasia"** (61 presentations, 24 oral and 37 posters)